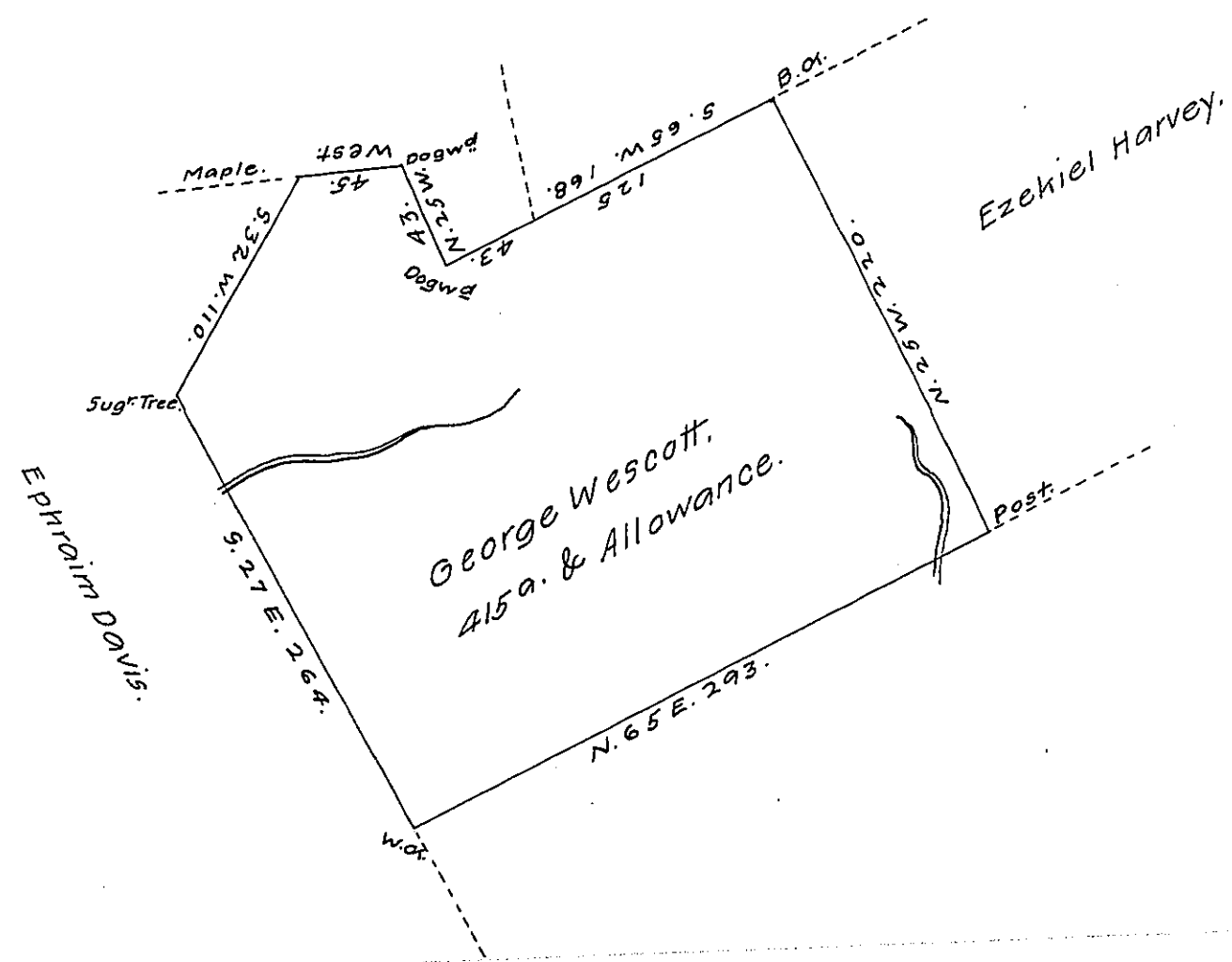


John Locke.

Philip Locke.



Survey'd to George Wescott on the 23^d Nov^r 1784, The above described Tract of four hundred & fifteen acres & allowance of six & Cent. Situate near crooked creek in Westmorland County By warrant of the 8th July 1784.

Joshua Elder, D.S.

John Lukens, Esqr, sr Genl.

IN TESTIMONY that the above is a copy of the original remaining on file in the Department of Internal Affairs of Pennsylvania, made conformably to an Act of Assembly approved the 16th day of February, 1833, I have hereunto set my Hand and caused the Seal of said Department to be affixed at Harrisburg, this twenty fourth day of May, 1907.

Henry Howell
Secretary of Internal Affairs.